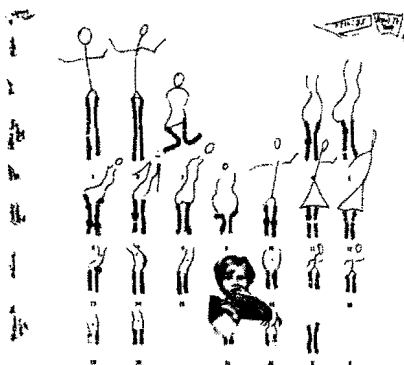


3:44:45
 Part of the
 hour is
 erasure
 like genotype
 stamping on
 phenotype

Genotype

Phenotype

3:44:45 We come to the dark double x and wonder what does a chromosome worry whose genes carry ovary make a face what name arrive on the face what shape When born she drew a line to the first mother from whom was the first mother burned There were several shapes to edit a knot in the knee a string of cancer these genes like loose squiggles of time I mean twine which will fray at the ankle (time) go dust at the calf the hour does a face Unsquare the hour of its making her elbow bleeds to a wing a sibyl propped on 22 pairs of evidence part of an hour is erasure like genotype stamping on phenotype a blur at the edges of the thought box & wet paint around the caption her macroscopically visible aspects (46,XX) in her haploid cell she sneezes to show she's (the quote marks keep falling off her)



3:44:45
 Part of the
 hour is
 erasure
 like genotype
 stamping on
 phenotype

Genotype

Phenotype

3:44:45 We come to the dark double x and wonder what does a chromosome worry whose genes carry ovary make a face what name arrive on the face what shape When born she drew a line to the first mother from whom was the first mother burned There were several shapes to edit a knot in the knee a string of cancer these genes like loose squiggles of time I mean twine which will fray at the ankle (time) go dust at the calf the hour does a face Unsquare the hour of its making her elbow bleeds to a wing a sibyl propped on 22 pairs of evidence part of an hour is erasure like genotype stamping on phenotype a blur at the edges of the thought box & wet paint around the caption her macroscopically visible aspects (46,XX) in her haploid cell she sneezes to show she's (the quote marks keep falling off her)

Third experiment with an hour

3 (THIRD HOUR'S RESIDUE)

3:44:45 We come to the dark double x and wonder what does a chromosome worry
 whose genes carry ovary make a face what name arrive on the face what
 shape When born she drew a line to the first mother from whom
 was the first mother burned There were several shapes to edit a knot in the knee
 a string of cancer these genes like loose squiggles of time I mean twine
 which will fray at the ankle (time) go dust at the calf the hour does a face
 Unsquare the hour of its making her elbow bleeds to a wing a sibyl
 propped on 22 pairs of evidence
 part of an hour is erasure like genotype stamping on phenotype
 a blur at the edges of the thought box & wet paint around the caption
 her macroscopically visible aspects (46,XX) in her haploid cell she sneezes to show she's
 (the quote marks keep falling off her)

ghosted the teeth of radiance

/petals /letters like

the hour takes tweezers

to its hairs 4:46:35